



Multiple Application Platform Server

## MAPS 5.3 Release Guide

*Product version 5.3*

*Last updated 3/28/2017*

# Trademark, Publishing Statement, and Copyright Notice

---

© 1998-2017 Evisions, Inc. All rights reserved.

This software and related documentation are provided under a license agreement containing restrictions on use and disclosure and are protected by intellectual property laws. No part of this document may be reproduced, stored in or introduced into a retrieval system, or transmitted in any form or by any means (electronic, mechanical, photocopying, recording, or otherwise), or for any purpose, without the express written permission of Evisions, Inc.

The information contained herein is subject to change without notice and is not warranted to be error-free. Product features referenced herein for a period of time may not match product contents. Evisions, Inc. does not warrant that the functions contained in the software will meet your requirements or that the operation of the software will be uninterrupted or error free. Evisions, Inc. reserves the right to make changes and/or improvements in the software without notice at any time.

This software and documentation may provide access to or information on content, products, and services from third parties. Evisions, Inc. and its affiliates are not responsible for and expressly disclaim all warranties of any kind with respect to third-party content, products, and services. Evisions, Inc. and its affiliates will not be responsible for any loss, costs, or damages incurred due to your access to or use of third-party content, products, or services. Evisions, Inc. does not endorse the content or developer of any products or web sites mentioned.

All information in this guide is designed for instructional purposes only. Evisions, Inc. makes no guarantees regarding the accuracy or performance of any techniques used in this guide. Software configurations and environments may vary, and some techniques used in this guide may not operate efficiently under all configurations. This guide may contain examples of various technologies or products, which are the sole property and responsibility of their creators.

Trademarks are the property of the respective owners for any products mentioned herein.

# Table of Contents

---

<b>Table of Contents</b> .....	<b>3</b>
<b>What's New in MAPS 5.3?</b> .....	<b>4</b>
MAPS Updates .....	4
Product versions .....	4
Installation .....	4
1. Prepare test environment and ensure current backup .....	4
2. Check for updates .....	4
3. Allow update process to complete .....	5
4. Verify the latest version is installed .....	5
<b>MAPS Administrators</b> .....	<b>6</b>
Specifying a Time Range for Schedules .....	6
<b>MAPS 5.3 Release Notes</b> .....	<b>7</b>
Enhancements .....	7
Resolved Issues .....	7
<b>Getting Help</b> .....	<b>8</b>

# What's New in MAPS 5.3?

---

Evisions is pleased to announce the release of MAPS version 5.3, which includes the following changes:

- When editing Argos schedules, you can now modify the time range during which the schedule is permitted to run.
- Additional enhancements and resolved issues.

We appreciate the feedback received from all of our users. Our products would not be what they are today without your continued support. If you have any comments or suggestions, please do not hesitate to [open a HelpDesk ticket](#) and let us know.

## MAPS Updates

---

MAPS 5.3 is an update to the MAPS service (which includes the eLauncher) and the MAPS Configuration tool. You should upgrade both components concurrently.

### [Product versions](#)

The latest versions of MAPS included in this release are:

- MAPS service 5.3.0.1482 / MAPS configuration 5.3.0.783/ eLauncher 5.3.0.2

## Installation

---

### [1. Prepare test environment and ensure current backup](#)

We highly recommend installing updates in a test environment before applying them to your production environment. You should make sure that a current backup is available in case of any unforeseen issues. To create a full backup of your MAPS environment, go to the **Server** -> **Backups** screen in MAPS and click **Backup Now**.

### [2. Check for updates](#)

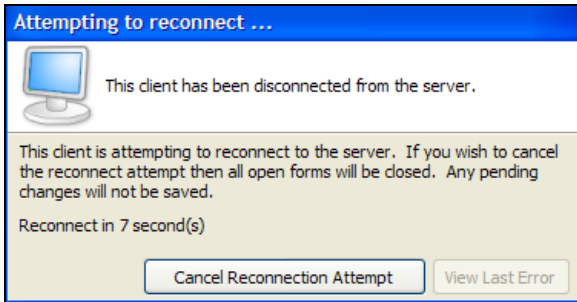
Click the **Check for Updates** button in the MAPS Configuration tool to view available updates.

If you are not already running MAPS 4.x, please refer to the [MAPS 4.0 Upgrade Guide](#) for instructions prior to proceeding with this upgrade.

It is possible to apply updates when users are on the system; however, to avoid the possibility of losing unsaved work we recommend applying updates during off hours.

### 3. Allow update process to complete

When applying updates to the MAPS service you will be temporarily disconnected from the server:



The update process may take a few minutes to complete. **Do NOT cancel the reconnection attempt or manually restart the server.** You will automatically be reconnected to the server once the update has been applied.

### 4. Verify the latest version is installed

To ensure that you are on the most current version, continue clicking the **Check for Updates** button and applying the updates until no new updates are available.

### Please Provide Us with Your Feedback!


As always, we welcome any [feedback or suggestions](#) you may have. We very much appreciate your thoughts and suggestions, so please keep the great ideas coming!

# MAPS Administrators

## Specifying a Time Range for Schedules

When editing an Argos schedule on the Mapplets -> Argos -> Scheduling screen, you can now change the time range in which the schedule is permitted to run. This is a new Argos feature added in version 5.3.

**Edit "Dept PTO Report (Monday)"**

 Edit details of this scheduled report. There are many other properties of this scheduled report that can only be changed from within Argos.

Name: Dept PTO Report  Active

Schedule created by: Argos\_User Run schedule as this user: Argos\_User

Next scheduled date/time: 5/20/2017 9:00:00 AM Final date of execution: 7/13/2017 12:00:00 AM

Specify the days of the week this schedule runs

Monday  Wednesday  Friday  Saturday  
 Tuesday  Thursday  Sunday

Frequency: # of weeks Amount: 2

Only run between 6:00:00 AM and 6:00:00 PM

Actual next run date/time (updated by server after saving):  
Monday, May 20, 2017 at 9:00:00 AM

Maximum timeout (# minutes): 0  Use default

OK Cancel

Check the **Only run between [time] and [time]** box to enable the start and end times. The schedule will execute according to its specified frequency, but will never run during blocked-out times. This option can be used to configure, for example, a schedule that runs every hour between 8 AM and 5 PM, and then stops overnight so that users do not receive emails when they are not at work.

When this option is not checked, schedules may run at any time.

# MAPS 5.3 Release Notes

---

MAPS Service 5.3.0.1482 / MAPS Configuration Tool 5.3.0.783 / eLauncher 5.3.0.2

## Enhancements

Area	Description	Issue number
Scheduling	When editing Argos schedules, you can now modify the time range during which the schedule is permitted to run.	MAPS-1365
User interface	Redesigned the Email Server Properties dialog to separate the properties into different screens according to function.	MAPS-1400

## Resolved Issues

Area	Description	Issue number
eLauncher	The default eLauncher logo was not showing up on the Server -> Launch Page screen in MAPS Config when the field was blank or set to the default image location.	MAPS-1399
FTP	On the FTP -> Keys screen, clicking on the column headers did not change the sort order from the default of alphabetical by filename.	MAPS-1336

# Getting Help

---

For information on using the software, please refer to the in-product Help, which contains detailed information on all aspects of the product.

If you are having problems with the installation or configuration, you can search our knowledge base of common issues and their resolutions at <http://helpdesk.evisions.com>. If you are unable to find the solution, submit a HelpDesk request with a detailed explanation of the problem you are experiencing.

Please do not hesitate to contact the Evisions HelpDesk if any questions or problems arise. We are here to help you and want to ensure your success.

If you find that areas of this documentation could benefit from additional detail or clarification, please let us know. We are constantly trying to improve the installation process to make it as easy as possible.